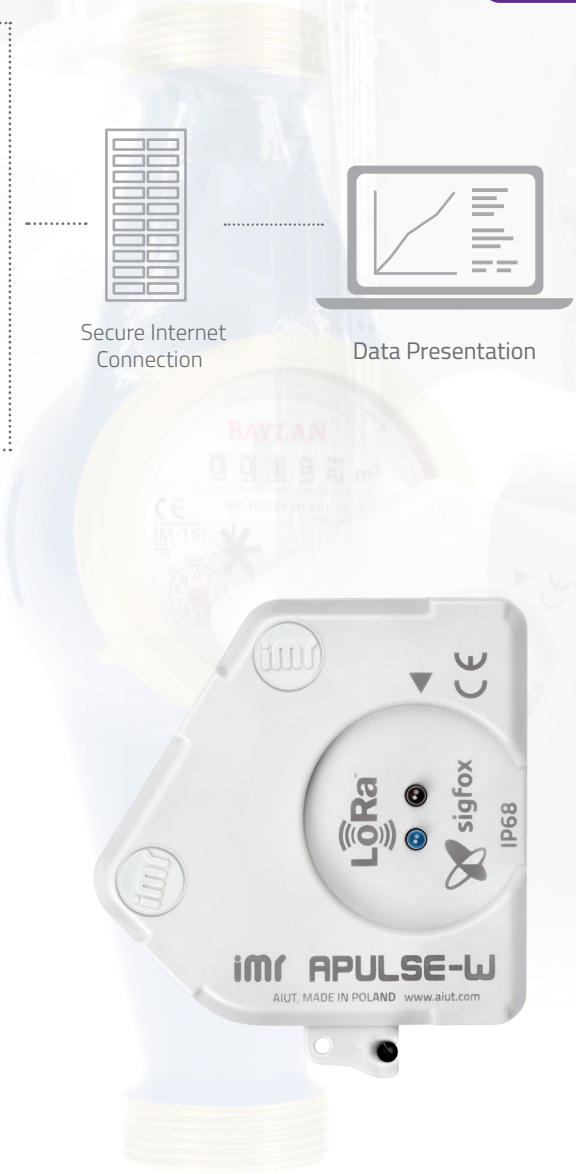


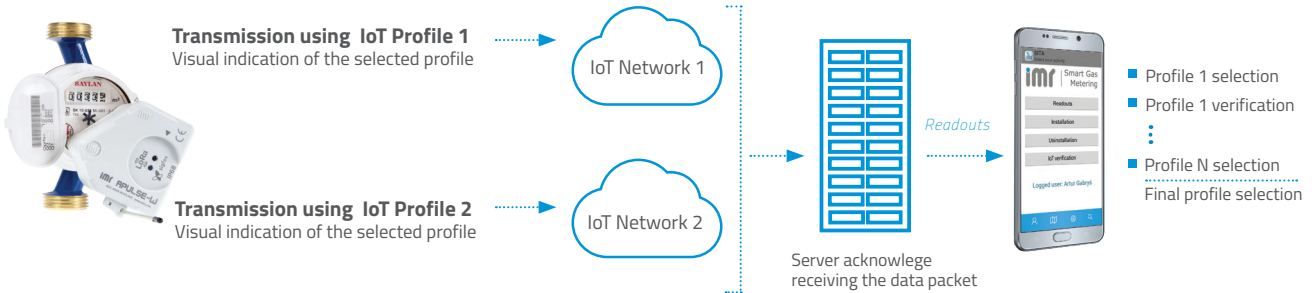
- ✓ IoT Connectivity / SRD wireless communication
- ✓ Compatible with AMR-ready water meters by Baylan
- ✓ Uni- or bidirectional radio transmission
- ✓ High capacity data storage
- ✓ On-line alarms
- ✓ Suitable for flooded pits (IP68)
- ✓ Data encryption
- ✓ External antenna enhancing range
- ✓ Installed directly on water meter



APULSE-W is an autonomous, battery powered IoT radio extension module installed on Baylan water meters. APULSE-W receives data from AMR-ready water meters and transmits them via **Sigfox** or **Lora** low power network. The device registers consumption profile as well as magnet and tamper detection.

The module and water meter are inductively coupled what prevents from magnetic fraud. Sophisticated engineering design guarantees 10 years battery life time with daily data transmission. APULSE-W radio extension module is a perfect choice for both fixed and walk-by systems.

Check communication and select appropriate IoT profile that ensures stable APULSE reception. Available IoT Networks: **LoRa, Sigfox.**



Smart Water Metering by AIUT is suitable for fixed and walk-by readout. APULSE-W can also provide wireless communication autonomously with IoT (LPWAN) technologies. The systems can operate simultaneously for maximum convenience and gradual investments.

Low Power Radio Communication

- Sigfox transmission: radio frame - every 24 h
- Lora transmission: radio frame - every 24 h
- IMR IoT: 868MHz, 25mW
range: 1000m (open space)
- IMR IoT transmission:
radio frame - twice a day scheduled or on request
- IMR IoT bidirectional communication after transmission:
data archive, diagnostics, configuration
- Event transmission: Sigfox or Lora and IMR IoT
- Event types: device removal, external magnet, reverse/max/min/ no flow, low battery
- Summary reports with consumption profile
- Opto port and IMR IoT radio available for on-site set up, configuration and diagnostic

Environmental Parameters

- Robust design, secured with seals
- Suitable for outdoor environment
- Operational temperature -25°C to +55°C
- IP68

Battery

- Non-replaceable, internal
- 10 years lifetime

Dimensions

- Height: 39 mm (108 mm with antenna), width: 65 mm, depth: 64 mm

Supported Water Meters

KK-1, KK-12, KK-13, KK-14, KK-16, KK-17, TK-2, VK-6, VK-10 and VK-11

Management system

- IMR HES - a high class application for readouts, configuration, and communication management. A flexible and customizable communication platform supporting devices using various communication protocols
- Browse current and historical data with SIMAX web application, get e-mail summary reports
- Manage installation process, supervise and maintain high system performance with SITA mobile application